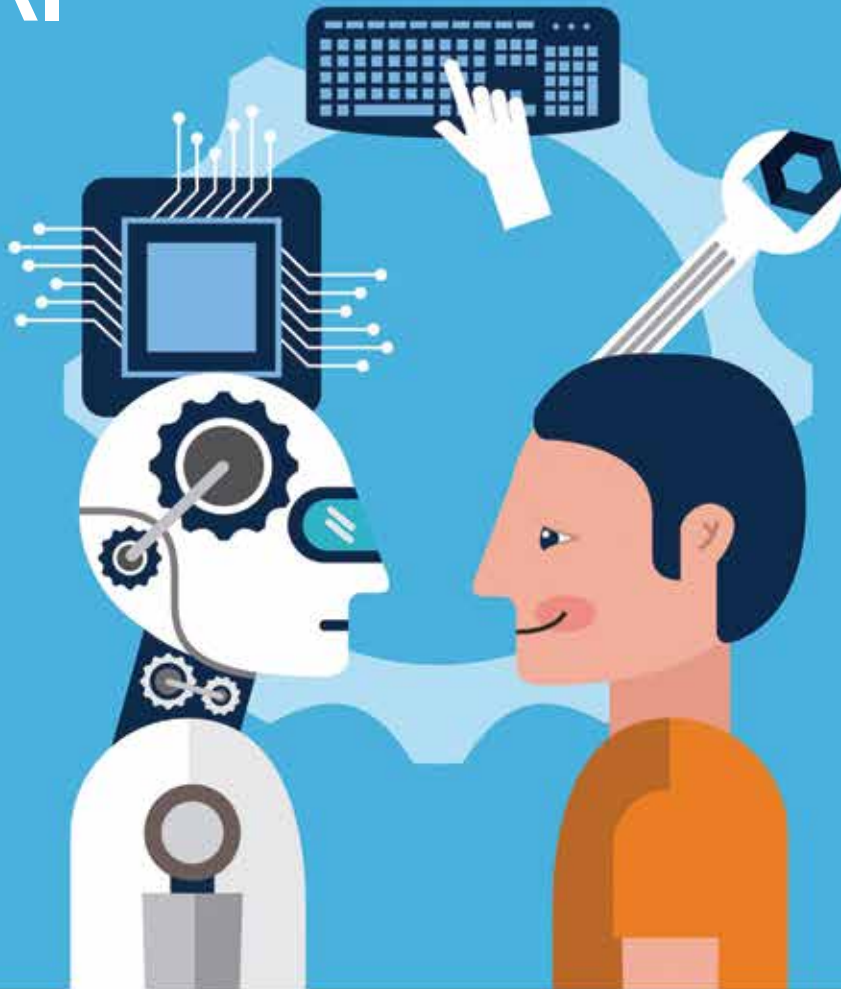
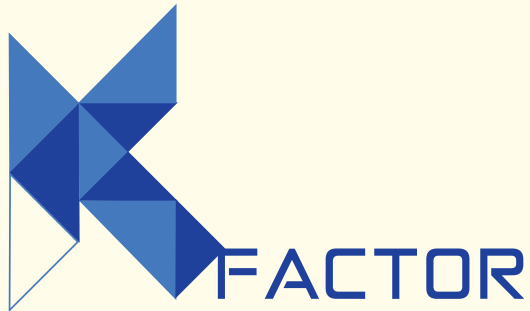


Knowledge Simulator on AI



Powered by





Knowledge Simulator on Ai

In the past years, a collection of hardware, software and online services have managed to bring changes and reforms to Students' Test/Evaluation methods. But the true evaluation of education is yet to arrive.

Artificial Intelligence has proven its role as a game changing factor in an increasing number of fields, causing transformations unimaginable in the past. It's now showing glimmers of how it might forever change the Student Testing/Evaluation process, one of the oldest skills that mankind has mastered.



Here's how AI and its derivatives are gradually finding their way into the classroom, and beyond.

Traditionally, Schools/Tuition House/Teachers/Parents adopt a one-size-fits-all approach to testing/evaluation. This is a problem that Artificial Intelligence is solving. Machine Learning algorithms, programs that glean patterns from data and provide insights and suggestions, help teachers to find gaps in knowledge of students and point to where students are struggling with subject matter.



WHAT IS KFactor?

K_FACTOR™ is an AI-Powered app testing tool which capitalizes on the huge store of student-teacher interaction data it has collected from millions of lessons.

Tuple has launched a AI project that aims to find positive testing patterns.

K_Factor's goal is to create a platform that gives real-time feedback and help tutors become better at evaluating students.

The system will detect whether a student's reaction to a concept follows a pattern of preconceived notion or a one way understanding.

By giving early warning to teachers, the platform can help prevent wrong learning further down the road.




Testing of Knowledge is a vital process that provides Students/Parents satisfaction within an application and helps in safeguarding against potential failures that may prove to be detrimental down the line. It is a planned process where the application is assessed and analyzed under certain conditions to understand the overall threshold and risks involved in its implementation.

By assimilating machines which can meticulously mimic human behavior, the team of testers can move beyond the traditional route of manual testing models and progressively move forward towards an automated and precision-based continuous testing process.

K_FACTOR™ testing platform can recognize changed controls more efficiently than a human, and with constant updates to its algorithms, even the slightest changes can be observed.



Some of the salient benefits of K_FACTOR™ in testing



••••• Vodafone RO 22:06 100% Skip

• ● ● ● ●

Improved accuracy

To err is human. Even the most meticulous tester is bound to make mistakes while carrying out monotonous manual testing. This is where K_FACTOR testing helps by performing the same steps accurately every time they are executed and never miss out on recording detailed results. Testers freed from repetitive manual tests have more time to create new automated software tests and deal with sophisticated features.




••••• Vodafone RO 22:06 100% Skip

• ● ● ● ●

Going beyond the limitations of manual testing

It is nearly impossible for the most significant software/ Tuition House/Teachers/Institutions to execute a controlled web application test with 1000+ users. With K_FACTOR one can simulate tens, hundreds or thousands of virtual set of users that can interact with a network, software or web-based applications.




••••• Vodafone RO 22:06 100% Skip

• ● ● ● ●

Increase in overall test coverage

With K_FACTOR testing, one can increase the overall depth and scope of tests resulting in overall improvement of software quality. Automated software testing can look into memory and file contents, internal program states and data tables in order to determine if the software is behaving as it is expected. All in all, test automation can execute 1000+ different test cases in every test run providing coverage that is not possible with manual tests.



••••• Vodafone RO 22:06 100% Skip

• ● ● ● ●

Saved Time + Money = Faster time to Evaluate

K_FACTOR tests can be executed again and again, with zero additional cost at a much faster pace. Software testing time span can be reduced from days to mere hours which translates directly into cost savings.

K_FACTOR TEST MODULES/ VERSIONS

Free Assessment

One Exam every week/Retake Exam/No Review

Full Assessment

Exam based on NCERT Guidelines/Retake Exam/Review Exam

AI Assessment

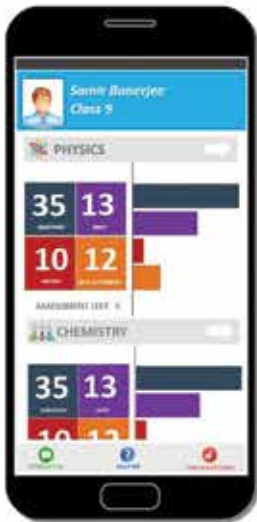
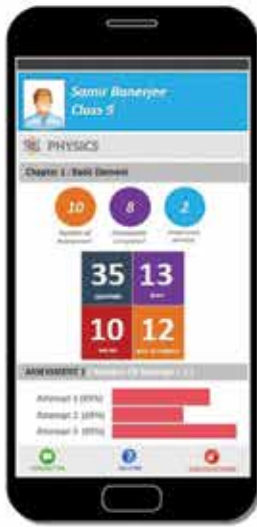
Assessment evaluated by AI to identify depth on the Chapter/Subject. AI assigns the Test automatically and evaluates accordingly

AI In-depth Analysis Assessment

AI will identify the weakness of the standard on particular chapter in depth including any lacking of knowledge in preliminary knowledge

Available in ANDROID, iOS & Web Version.







FACTOR

Knowledge Simulator on Ai



Design by adva



Tuuple Technocraft Pvt. Ltd.

Anaya Chambers, 9th Floor, GN 38/5 Sector - V; Salt Lake City; Kolkata - 700091



(033)-2357-6624



(33)-23576625



www.tuuple.in



info@tuuple.in